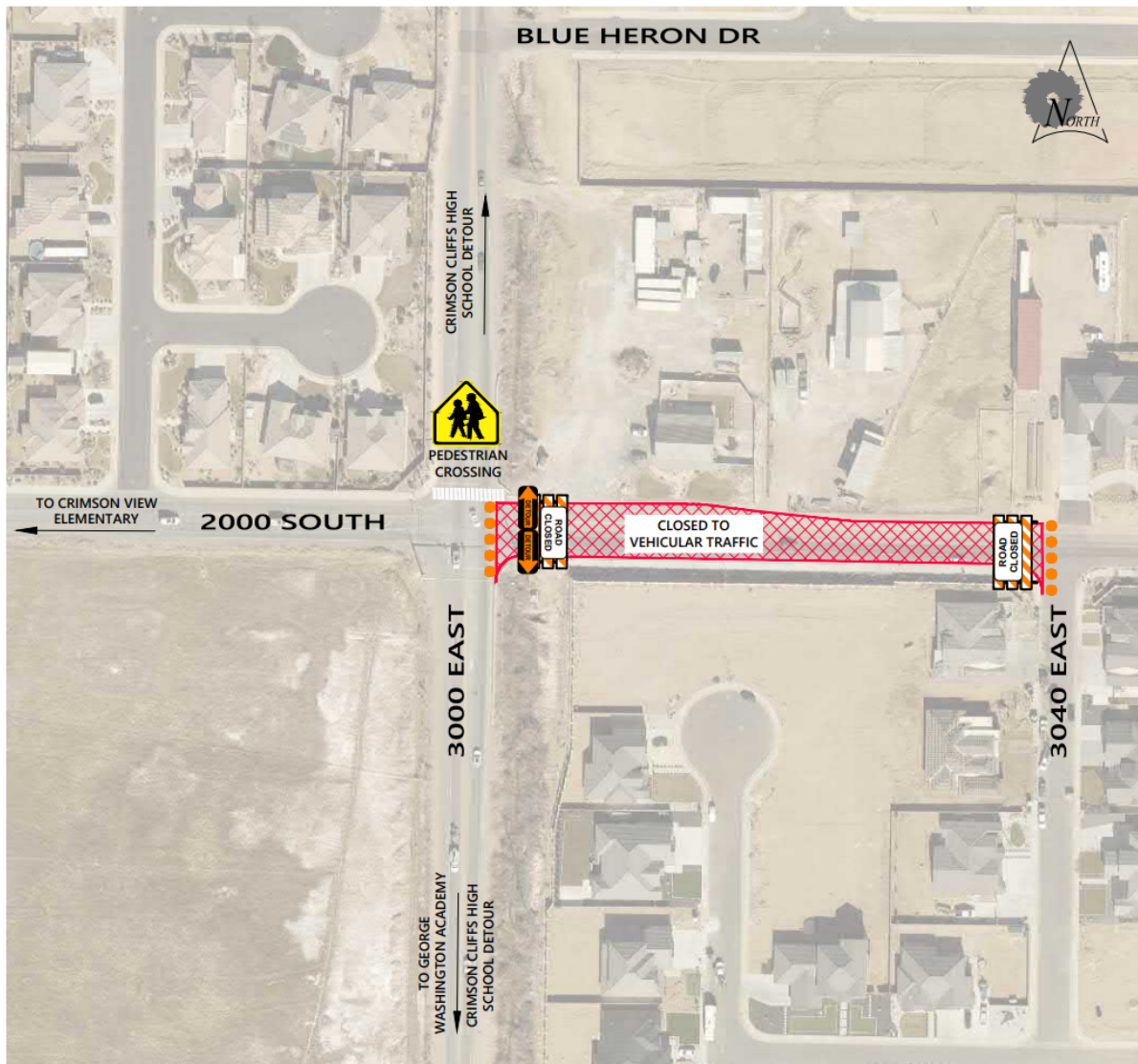


3000 East Improvements

2000 South, Eastside Intersection Closure & Detour



At the time school starts (Tuesday, August 15) due to construction on 3000 East, 2000 South will be closed east of 3000 East. **The school crossing on 3000 East at 2000 South will remain in operation with a crossing guard.**

Motorists will need to adjust travel times and use alternate routes to access the schools in the vicinity. For updates, please see www.sgcity.org/3000East. Thank you for your patience!

Hotline/Cell/Text - Lisa Beck, Public Information Contact, (435) 531-1358

A St. George City PW Project - www.sgcity.org/3000east *Project schedule is subject to weather and other unforeseen circumstances.